



2019 Fall Meeting

EDUCATING BEEKEEPERS *and*
SUPPORTING LOCAL CLUBS

2019 OFFICERS

President

Linda Tillman

Vice President

Gina Gallucci

Secretary

Derrick Fowler

Treasurer

Paul Berry

Newsletter Editors

Holly Bayendor &

Kathy Bourn

Past President

Mary Cahill Roberts

Webmaster

Harvest Hoffman

DIRECTORS

Jennifer Berry

Bobby Chaisson

Arthur "Brutz" English

Steve Esau

Slade Mercer

Sophia Price

Jane Quattlebaum

SPONSORED BY:



MANN LAKE
WE KNOW BEES

Blue Ridge
Honey Company



FEATURING THE
Annual
Honey
Show

\$500 PRIZE
FOR BEST IN SHOW



September 26-28
CUMMING, GEORGIA

Welcome! Georgia Beekeepers

Celebrate!



The Georgia Beekeepers Association will be 100 years old in 2020 and is 1000 members strong. We began as a small group of beekeepers meeting in Metro Atlanta and are now a state-wide group offering two large conferences every year with almost fifty clubs across the state. We have programs in the prisons, offer training to established as well as junior beekeepers, and unite clubs in the various areas of the state through the work of our directors on the GBA Board. Cars around the state are sporting our honey bee license plate. Among our members are beginners, hobbyists, Master Beekeepers, sideliners, and commercial beekeepers alike. Welcome to our fall conference!



Get your tag!

Our beautiful honey bee license plate is appearing on cars all over Georgia. While the license plate is outstanding with any combo of letters and numbers, having a tag that starts with BEE is unique and special. We were allotted 100 tags that begin with BEE. We offered the 100 tags to people whose contributions to GBA and beekeeping we wanted to acknowledge. But many were not taken. We will be offering these BEExx tags for silent auction at this conference!



Want a BEE tag for your car? Stop at the silent auction table and bid for your choice.

Thursday, September 26 (evening)

4:30 - 6:00 GBA Board meeting
*Location: Redbud**

6:15 - 7:00 Cocktail reception
Location: Ballroom

7:00 - 9:00 Dinner, (prepaid at registration)
Location: Ballroom

7:30 - 8:30 **Jennifer Berry: MY TWENTY-PLUS YEARS IN BEEKEEPING**
With so much attention on varroa and viruses, climate change and pesticides, walls and budgets, tweets and impeachments, campaigns and investigations, most of us just need a break. That's why I plan to ramble on about my 20+ years of beekeeping, how bees changed my life and why I wouldn't do anything else.

**Please see the map on the back cover for room locations.*

Friday, September 27

7:45 – 8:45 President's Breakfast A meeting of all attending local club presidents.

8:00 – 10:00 Honey Show entries accepted in Honey Show Room

8:00 – 11:00 Voting for Officers

8:45 – 9:00 Opening Remarks, Linda Tillman, GBA President

9:00 – 9:45 *Clarence Collison*: A CLOSER LOOK AT FACTORS AFFECTING QUEEN QUALITY
The quality of the queen is directly related to the development and productivity of the colony. There are numerous factors that can affect queen quality. Besides looking at her basic biology, we will develop answers to two basic questions: 1) How can you determine if you have a good queen? And 2) What makes a good queen?

9:45 – 10:30 *Jennifer Berry*: OXALIC ACID: GO WITH WHAT WE KNOW!
Today, there are three approved application methods for OA for varroa control, but there's a fourth that is still gaining popularity across the country. UGA and Auburn University conducted two field trials to test the efficacy of this new method. We will discuss the results of the study along with the other three approved methods of OA.

10:00 – 4:00 Honey Show Judging

10:30 – 11:00 BREAK *Visit vendors and walk to breakouts*

11:00 – 11:45 Breakout Sessions A Breakout Sessions A are repeated as Sessions B at 2:00 pm.

11:45 – 12:45 LUNCH Announcements and door prizes

12:45 – 1:30 *Leo Sharaskin*: HORIZONTAL HIVES: ADVANTAGES AND MANAGEMENT
Hive can be arranged on one level in a long horizontal box, eliminating heavy lifting, giving easy access to all frames, and simplifying many beekeeping operations. Many hobby and commercial beekeepers in Europe use horizontal hives exclusively. Learn how management affects bees and honey production in vertical and horizontal hives and how you can achieve excellent results with less effort.

1:30 – 2:00 BREAK • *Visit vendors and walk to breakouts*

2:00 – 2:45 Breakout Sessions B

2:45 – 3:15 BREAK *Visit vendors and walk to Ballroom*

3:15 – 4:00 *Jaret Daniels*: THE IMPORTANCE OF ROADSIDES FOR INSECT POLLINATION
Populations of managed and wild insect pollinators have suffered declines in recent years prompting strategies to help safeguard the valuable ecosystem services they provide. Roadsides have increasingly become a focus to help maximize forage and nesting resources as well as link fragmented landscapes.

4:00 – 7:00 Dinner on your own

7:00 – 8:00 Cookies and Honey Ice Cream Reception
Honey Show Awards and Beekeeper of the Year announcements, Honey Show open for viewing

Saturday, September 28

8:00 - 11:15 Voting for Officers

8:00 - 11:15 Honey Show open for viewing

8:30 - 8:45 Visit vendors and buy raffle tickets

8:45 - 9:00 Announcements

9:00 - 9:45 GBA Business meeting

9:45 - 10:00 Announcements and door prizes

10:00 - 10:45 **Leo Sharaskin: NATURAL BEEKEEPING THAT WORKS**

Wild honeybees are thriving despite parasites and disease. Discover the secrets behind their success and how we can create favorable conditions in our managed hives. Learn how to catch wild swarms, breed local survivor stock, and keep bees healthy and productive, treatment-free. This visually-rich talk is full of practical insights and success stories from both small-scale and commercial natural beekeepers.

10:45 - 11:15 BREAK • Visit vendors and walk to breakouts

11:15 - 12:00 Breakout Sessions C Breakout Sessions C are repeated as Sessions D at 3:15 pm

11:30 - 12:45 Pick up honey show entries

12:00 - 1:00 **LUNCH** Announcements and officer election results

1:00 - 1:45 **Clarence Collison: APPLYING THE BASICS OF HONEY BEE BIOLOGY**

Understanding bee biology is the foundation of colony management. Virtually all bee activities are directly stimulated and coordinated to a large degree by pheromones. Examining brood patterns can aid in determining the overall condition of the colony, quality of the queen, colony strength, healthiness of the bees and inclination to swarm and help you making management decisions.

1:45 - 2:30 **Lewis Bartlett: APIS THROUGH THE ZOOLOGIST'S LENS: THE MOST MARVELOUS CREATURES ON EARTH?**

Research constantly proves the brilliance of honeybees. The only animals to ever win ecology Nobel prizes, the complexity of their biology is still being uncovered. While nature holds many marvels, honeybees seem capable of more wonders than almost any other animal. What species compete with their talents, and what discoveries might we still make?

2:30 - 2:45 BREAK • Final visit to vendors

****3:00 pm**** Silent Auction for BEExxx license plates ends

3:00 - 3:45 Breakout Sessions D

4:00 - 4:45 **Julia Mahood: CONFESSIONS OF A BACKYARD BEEKEEPER**

A light hearted look at one woman's beekeeping adventures over the last fifteen years.

4:45 - 5:00 Raffle drawings, conference ends!

Keynote Speakers



Dr. Lewis Bartlett is an infectious disease biologist, entomologist, and evolutionary ecologist at the University of Georgia's Center for the Ecology of Infectious Diseases. He uses field studies, laboratory experiments, and computer simulations to understand how changes in beekeeping are affecting bee diseases in both the short and long term.



Jennifer Berry is the Research Professional and Lab Manager for the University of Georgia Honey Bee Program. On nights and weekends, she operates Honey Pond Farm, which sells quality nucleus colonies, teaches classes on how to keep bees alive and how to raise superior queens at her farm in Georgia.



Clarence H. Collison is an Emeritus Professor of Entomology and Plant Pathology at Mississippi State University. He has written numerous beekeeping publications and participated in many educational programs for the beekeeping community. He writes the monthly column "A Closer Look" for *Bee Culture* and has published two books.



Jaret Daniels, Ph.D is Professor of Entomology at the University of Florida and the Director of the McGuire Center for Lepidoptera and Biodiversity at the Florida Museum of Natural History. An entomologist by training, he specializes in the ecology and conservation of at-risk butterflies and other native insect pollinators.



Julia Mahood is a Georgia Master Beekeeper, graphic artist, President of MABA, and the GBA 2018 Beekeeper of the Year. She teaches beekeeping at Lee Arrendale State Prison and coordinates volunteers for the GBA prison program.



Dr. Leo Sharaskin is a full-time natural beekeeper in the Ozarks of southern Missouri and editor of "Keeping Bees With a Smile." He catches wild survivor-stock swarms and keeps bees treatment-free in horizontal hives. He writes for *American Bee Journal* and speaks internationally on sustainable beekeeping. His website: HorizontalHive.com

Breakout Speakers



Paul Berry is a UGA/YHBI Certified Master Beekeeper. He has been keeping and caring for honeybees off and on since 1987. His passion is teaching others about honeybees, his joy is catching and caring for swarms. In the past three seasons, he has caught over 100 swarms.



Selina Bruckner grew up in a small village in Switzerland where she extracted her first honey and got interested in bees. Now, she is a PhD at Auburn University studying potential combined effects of Varroa mites and neonicotinoids on honey bee health.



Bill Dunn started keeping honey bees in the "golden age" of beekeeping – before mites. Currently he runs anywhere from 50 to 150 hives and nucs, and he also uses these for club training classes. Alas, Bill is the only charter member left of the Forsyth Beekeepers Club.



Dr. Jennifer Leavey is the director of the Georgia Tech Urban Honey Bee Project, an interdisciplinary educational initiative with the goal of recruiting and retaining students in STEM careers through the study of how urban habitats affect honey bee health and how technology can be used to study bees.



Marilynn Parker became a beekeeper at age ten. She is now a Master Beekeeper and Welsh Honey Judge. There was a break in her beekeeping while raising two children, but she is back enjoying the benefits and pleasures of beekeeping. Her husband of 48 years allows her to continue this passion.



Sophia Price Beekeeper, bee educator, honey producer, Sophia is a lover of all things wax and propolis. The products she manufactures are her own recipes. Selling her own products at events, markets and festivals is a fun way to increase income.



Linda Tillman President of the Georgia Beekeepers Association and a Master Beekeeper, Linda has been keeping bees naturally and treatment free since 2006. Linda loves the people she has met in GBA. She has worked particularly hard this year on selling the license plate.

Breakout Sessions

SESSION A repeats as SESSION B

FRIDAY

SESSION A • 11:00 - 11:45
SESSION B • 2:00 - 2:45

Feeding the World Without Destroying it: What Role for Our Bees in Modern Agriculture • Lewis Bartlett

*Location: Ballroom**

Demand for agricultural output continues to grow worldwide, posing a monumental challenge for conservation biologists working to safeguard nature. One of the biggest debates in this topic is land sparing vs land sharing. Find out what role our bees might play in this, and if that role already shaping U.S. beekeeping.

Bees and Cheese – How the Swiss do it • Selina Bruckner

Location: Laurel

After two years of beekeeping in the US, it became clear to me that there are distinct differences between Swiss and American beekeeping practices. An attempt to compare beekeeping in different countries.

The Winter Bee: Why is She so Special? • Bill Dunn

Location: Redbud

This session will focus on the longest lived worker bee. Why she lives so long. What she is doing in the late winter and early spring to build up to that terrific spring colony. And as always the importance of early mite control.

A Few Dollars More • Sophia Price

Location: Training Room

Learn tips and tricks to put more dollars in your pocket. Utilize a few marketing strategies to step up your selling game to give you a fist full of dollars.

How to Become a Treatment Free Beekeeper • Linda Tillman

Location: Oak

Linda will talk about attaining survivor bees and about basic philosophy and practice of keeping bees naturally. She will also cover how to convert from your currently treatment-dependent bees to bees that can survive without treatment.

SESSION C repeats as SESSION D

SATURDAY

SESSION C • 11:15 - 12:00
SESSION D • 3:00 - 3:45

Catching and Caring for Honey Bee Swarms • Paul Berry

Location: Redbud

With a little swarm prevention thrown in at no additional cost.

The Collision of Honey Bees, Pesticides and Parasites • Selina Bruckner

Location: Oak

Varroa mites and neonicotinoids are known to independently cause negative effects in honey bees. But what if queens, workers and drones are exposed to both stressors simultaneously? An overview of potential interaction effects and mitigation strategies.

Landscaping for Pollinators • Jaret Daniels

Location: Laurel

Private yards and home gardens alone collectively comprise the largest percentage of greenspace in most urban areas. As a result, it is critical to ensure that these landscapes include appropriate resources to help support pollinators and other wildlife.

Tips for Finding and Reading the Best New Research Papers About Bees • Jennifer Leavey

Location: Ballroom

Primary research articles can be difficult to access and a challenge to read – you don't want to waste your time reading junk! In this session, we will discuss how to find research that has been well vetted and how to read articles critically using an exciting new article as an example.

Planning, Preparing and Providing a Honey Show for Your Club • Marilynn Parker

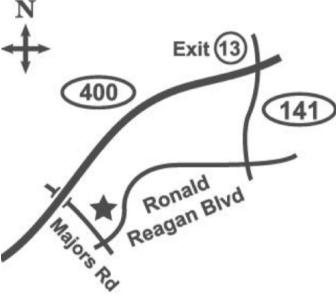
Location: Training Room

From start to finish you will be able to provide your club with planning and organizing each part of putting on a honey show. Your planning committee, secretary, stewards and judges along with the forms you will need to put on a quality honey show.

**Please see the map on the back cover for room locations.*

FORSYTH CONFERENCE CENTER

3410 Ronald Reagan Boulevard
 Cumming, Georgia 30041

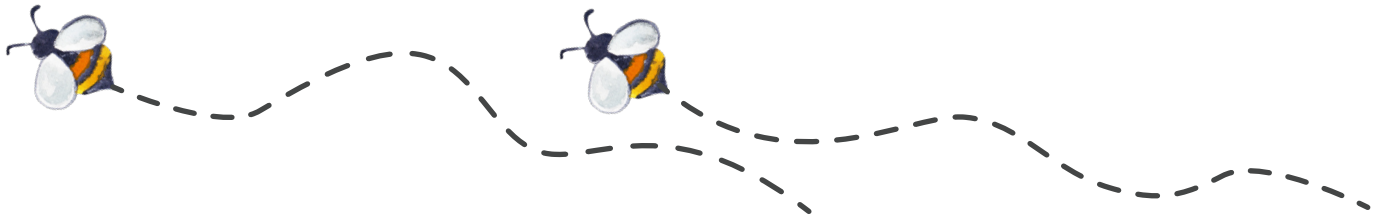
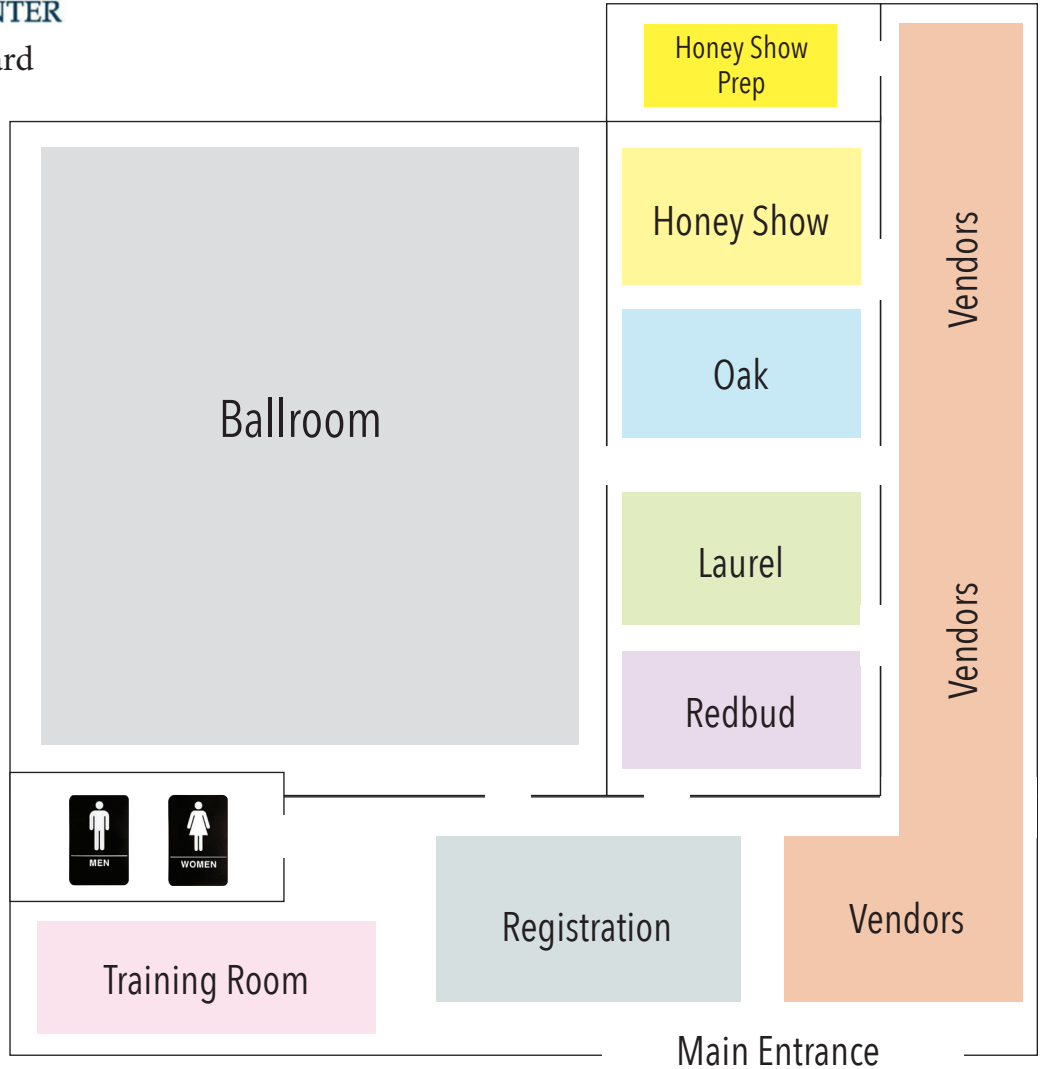


Directions going North:

- 400 North
- Take Exit 13, Route 141
- Right onto Route 141
- Right onto Ronald Reagan Blvd
- Entrance to Forsyth Conference Center is before intersection of Majors Road on the right

Directions going South:

- Take Exit 13, Route 141
- Left onto Route 141
- Right onto Ronald Reagan Blvd
- Entrance to Forsyth Conference Center is before intersection of Majors Road on the right



THANKS TO OUR SPONSORS

